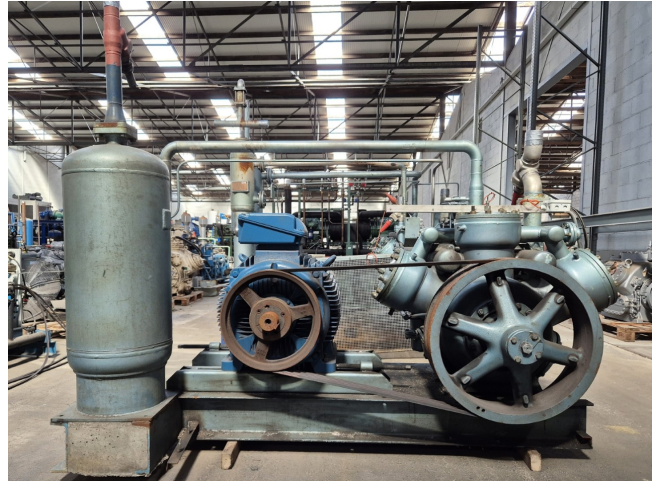


Grasso RC 311

Specifications

Marka	Grasso
Typ	RC 311
Czynnik chłodzący	NH 3 (ammonia)
kW at +10°C/+40°C	495,0*
kW at 0°C/+40°C	331,3*
kW at -5°C/+40°C	266,0*
kW at -10°C/+40°C	209,2*
Silnik elektryczny Specs	50 Hz - 90 kW - 1480 RPM
Podstawa na stalowej ramie	✓
Ciśnieniowe przełączniki bezpieczeństwa	✓
Wskaźniki ciśnienia	✓
Separator oleju	✓
Osuszający filter lini cieczy	✓
Okno widokowe	✓
m ³ / h	399
Uwagi	Y.o.b. 2005
Uwagi	* Elektro motor 1000 RPM
Rozmiary	2550x1200x1980 mm (LxWxH)
Stock	1



Description

Used Grasso RC 311

Used Grasso RC 311 open-type reciprocating compressor on NH3 (Ammonia). Complete with a Weg 280S/M-04 electromotor: 50/60 Hz - 90 kW - 1480/1785 RPM, Grasso OA 80L oil separator with a volume of 114 liters, pressure and safety switches/gauges and a sight glass. The compressor has a displacement of 399 m³/h at 1000 RPM.

*Why choose for HOSBV? Were not only the largest used refrigeration specialist in Europe, but also, we solely deliver our orders after performing an extensive test and an industrial cleaning. If requested we are happy to arrange your logistics.



